

# Large Element house Denmark.

Photo's by courtesy of Schaumann Group, Denmark  
Design and copyright by NIKE Arkitektur, Sweden

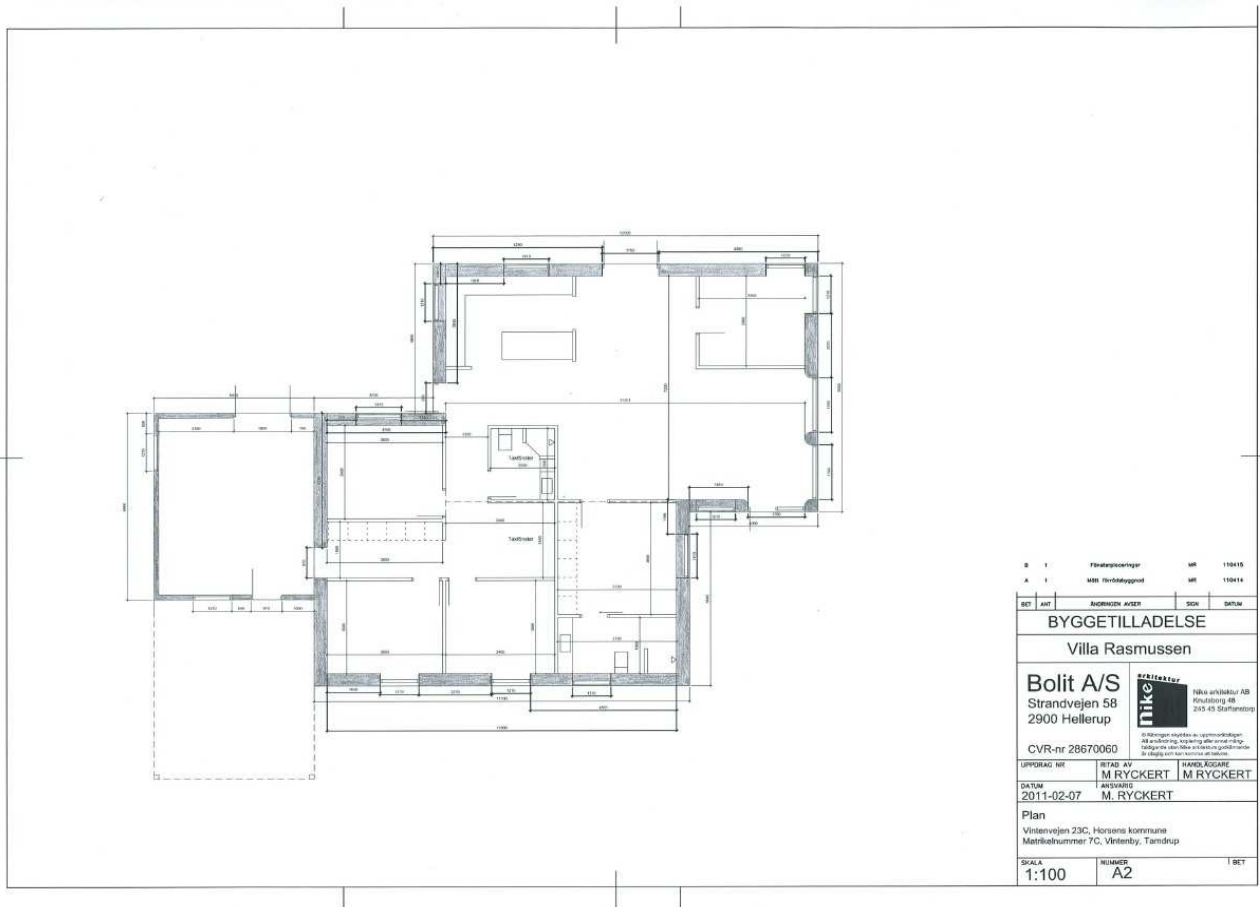


Living space villa: 173 m<sup>2</sup>  
Garage: 30 m<sup>2</sup>  
Wall thickness: 400 mm  
Garage: 150 mm, reinforced WWCB



# Large Element house Denmark.

Photo's by courtesy of Schaumann Group, Denmark  
 Design and copyright by NIKE Arkitektur, Sweden



# Large Element house Denmark.

Photo's by courtesy of Schaumann Group, Denmark  
Design and copyright by NIKE Arkitektur, Sweden



# Large Element house Denmark.

Photo's by courtesy of Schaumann Group, Denmark  
Design and copyright by NIKE Arkitektur, Sweden



All Large Element outer walls placed on foundation within one working day.